



# Harrisburg Project

## Software Support for Special Education

WEEKLY NEWS BRIEFING

JANUARY 24, 2022

[www.hbug.k12.il.us](http://www.hbug.k12.il.us)

[support@hbug.k12.il.us](mailto:support@hbug.k12.il.us)

800-635-5274

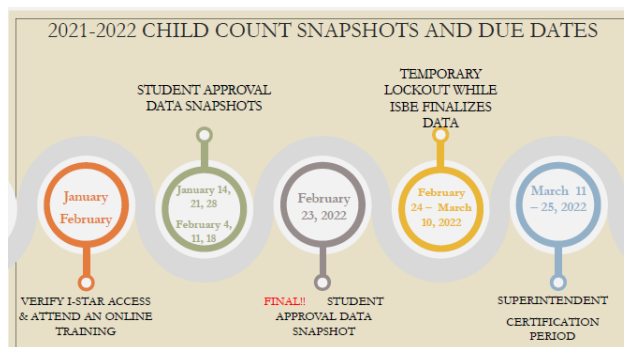
## December 1 Child Count Snapshot Continues

The December 1 Child Count Snapshot continues each Friday through February 18<sup>th</sup>. The **FINAL** December 1 Child Count Snapshot will be Wednesday, February 23<sup>rd</sup>. **No edits will be allowed after this final data collection.**

Districts should be reviewing the child count data reports each Friday to be sure all students active on December 1 have an 'Approved' *Student Approval* record in I-Star. This is the only time edits will be allowed. **If the December 1 Child Count is wrong on the February 23<sup>rd</sup> data collection, district superintendents will have to certify the incorrect number.** These next few weeks are critical! Be sure that the data is accurate and complete for your district!

If you were unable to attend the 'Preparing for Child Count' webinar, the recording is available to review at your convenience:

### [Preparing for Child Count](#)



### Dates to Remember

January 28, 2022 - December 1 Child Count Snapshot

February 4, 2022 - December 1 Child Count Snapshot

February 11, 2022 - December 1 Child Count Snapshot

February 18, 2022 - December 1 Child Count Snapshot

February 23, 2022 - FINAL December 1 Child Count Snapshot



### Inside this Issue . . . .

<b>December 1 Child Count Snapshots Continues</b>	<b>1</b>
<b>Recheck Edits</b>	<b>1</b>
<b>Upcoming ISBE Power Outage</b>	<b>2</b>
<b>Events</b>	<b>2</b>

## Recheck Edits

Good news! ISBE is now running the *Recheck Edits* process nightly. This means that you no longer need to run the process each day. Your error report will be current each morning.

Customized training is available at your convenience.

Click the following link to request an Individualized Training!! [Customized Training - Register Now!](#)

## ISBE Upcoming Power Outage

Due to a scheduled power outage for building maintenance, the ISBE network and website will not be available from 4:00PM Friday, February 11<sup>th</sup> - Sunday, February 13<sup>th</sup>. I-Star will be unavailable during this time.

## Event Registration

The new year is a busy time in I-Star with the required *December 1 Child Count* being taken. Harrisburg Project is hosting trainings that will assist staff members with accurately reporting your district's data.

Be sure to check the [Events](#) section on our website, [www.hbug.k12.il.us](http://www.hbug.k12.il.us), is the most up-to-date listing for on-line trainings.

1/27/22 Child Count Certification 9:00:AM 

2/3/22 Preparing for Child Count 9:00:AM 

2/17/22 Preparing for Child Count 9:00:AM 

3/7/22 Child Count Certification 9:00:AM 