



Harrisburg Project

Software Support for Special Education

WEEKLY NEWS BRIEFING

JANUARY 18, 2022

www.hbug.k12.il.us

support@hbug.k12.il.us

800-635-5274

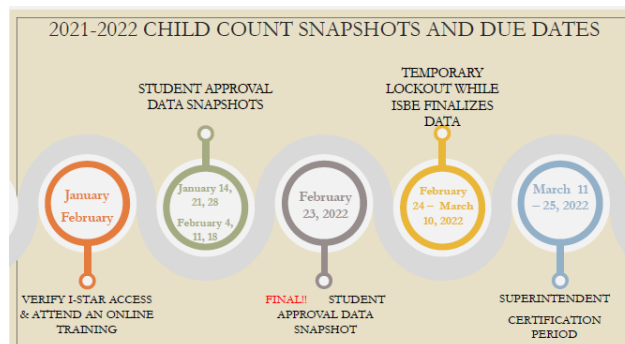
December 1 Child Count Snapshot Continues

The initial December 1 Child Count Snapshot was taken on Friday, January 14th and will continue each Friday through February 18th. The **FINAL** December 1 Child Count Snapshot will be Wednesday, February 23rd. **No edits will be allowed after this final data collection.**

Districts should be reviewing the child count data reports each Friday to be sure all students active on December 1 have an 'Approved' *Student Approval* record in I-Star. This is the only time edits will be allowed. **If the December 1 Child Count is wrong on the February 23rd data collection, district superintendents will have to certify the incorrect number.** These next few weeks are critical! Be sure that the data is accurate and complete for your district!

If you were unable to attend the 'Preparing for Child Count' webinar this past week, the recording is available to review at your convenience:

[Preparing for Child Count](#)



2020-21 Special Education Computation Reports

ISBE has released the Special Education Computation Reports into I-Star. To access these reports, go to the Reports Tab -> Report Type Student -> Report Categories Reimbursement/Claims. **Be sure to change the school year to 2020-21 in the Reports Filter prior to running these reports.**

Select Report	Description
<input type="radio"/>	Excess Cost Computation Sheet
<input type="radio"/>	Orphanage Computation Sheet
<input type="radio"/>	Private Tuition Computation Sheet

Dates to Remember

January 21, 2022 - December 1 Child Count Snapshot

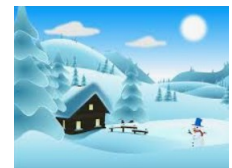
January 28, 2022 - December 1 Child Count Snapshot

February 4, 2022 - December 1 Child Count Snapshot

February 11, 2022 - December 1 Child Count Snapshot

February 18, 2022 - December 1 Child Count Snapshot

February 23, 2022 - FINAL December 1 Child Count Snapshot



Inside this Issue

December 1 Child Count Snapshots Continues	1
2020-21 Special Education Computation Reports	1
Unable to Locate Residential Placement Field on Student Approval Record	2
2021-22 Child Count Certification Instructions for Superintendents	2
Updates to I-Star	3
Events	3

Unable to Locate Residential Placement Field on Student Approval Record

The 'Unable to Locate Residential Facility' field should be completed when an IEP team determines that a student requires residential placement in a private facility, but the district has been unable to locate a facility to accept the student. When this box is checked, an editable field will open to allow an explanation to be typed.

If a student is unable to receive any services while waiting for the residential placement, the district should enter a Fund B *Student Approval* record, leaving the Private Facility blank. This will allow the user to select the 'Unable to Locate Residential' field and explain the situation. This record will be an error, however that can be ignored at this time.

Any questions related to the 'Unable to Locate Residential Placement' field should be directed to Harrisburg Project at 800-635-5274 or support@hbug.k12.il.us.

The screenshot shows the 'The 2021-2022 Student Approvals Data is Open.' form. The 'Approval Status' is 'Disapproved' and the 'School Year' is '2021-2022'. The 'Include on Approval' checkbox is checked. The 'Fund' is 'A' and '% Special Ed' is '3'. The 'Resident District' is 'Harrisburg CUSD 3 - 20-083-0030-26' and the 'Resident School' is 'East Side Intermediate School - 20-083-0030'. The 'Serving District' is 'Wabash & Ohio Valley Sp Ed Dist - 20-097-80' and the 'Serving School' is 'East Side Intermediate School - 20-083-0030'. The 'Disabilities' field is 'I-Speech and/or'. The 'Related Service' field has several dropdown menus. The 'Education Environment' is '01-Inside regular classroom 80% or more of day' and '% Time inside Reg Classroom' is '95'. The 'Unable to locate Residential Placement' checkbox is checked and highlighted with a red box. The 'Reason unable to place:' text box contains 'e.g. no facility accepted student'. The 'Term' is 'Both' and the 'Begin Date' is '8/13/2021'. The 'Date of IEP:' is '08/13/2021'.

2021-22 Child Count Certification Instructions for Superintendents

ISBE will open the Child Count Certification for superintendents on approximately, March 11th. Each district superintendent or authorized representative must log into I-Star to certify the December 1 Child Count displayed on the I-Star landing page. No corrections can be made to the displayed December 1 Child Count! Any correction to *Student Approval* data must be made by February 23rd.

To access the instructions for completing the Child Count Certification, click the following link:

[2021-22 Child Count Certification Instructions for Superintendents](#)

Updates to I-Star

ISBE released updates to I-Star on Wednesday, January 12th. To review the list of items included in this release, visit the [Recent Updates](#) to I-Star section of our website, www.hbug.k12.il.us.

Event Registration

The new year is a busy time in I-Star with the required *December 1 Child Count* being taken. Harrisburg Project is hosting trainings that will assist staff members with accurately reporting your district's data.

Be sure to check the [Events](#) section on our website, www.hbug.k12.il.us, is the most up-to-date listing for on-line trainings.

1/27/22 Child Count Certification 9:00:AM 🌟

2/3/22 Preparing for Child Count 9:00:AM 🌟

2/17/22 Preparing for Child Count 9:00:AM 🌟

3/7/22 Child Count Certification 9:00:AM 🌟