



Harrisburg Project

Software Support for Special Education

WEEKLY NEWS BRIEFING

WEEK OF APRIL 27, 2020

www.hbug.k12.il.us

support@hbug.k12.il.us

800-635-5274

Special Education FAQ Released by ISBE

In an effort to assist districts during this time of remote learning, ISBE has released the 'Special Education FAQ During Remote Learning'. To access this document, click the link below:

[Special Education FAQ During Remote Learning](#)

This document provides essential information regarding many 'hot topics' such as remote learning requirements for students with disabilities, IEP meetings, and required state and federal deadlines.

The questions and answers detailed in this document are meant to be used as a guide for districts when implementing remote learning for students with disabilities. However, if you have additional questions please contact Harrisburg Project for assistance at (800)635-5274 or by email at support@hbug.k12.il.us.

Sp Ed Youth-In-Care Verification Due May 15th

Evidence Based Funding (EBF) enrollment calculations must account and deduct the students receiving services as Youth-in-Care (YIC), Fund Codes E and F. In order to be sure your district is reporting all possible YIC students accurately the following steps should be followed:

- Review the students listed in the Possible Youth-in-Care tab in I-Star.
- Download the 'Possible YIC Students' from IWAS per the following instructions: [Possible YIC Students in IWAS](#).
- **ALL** YIC students (Fund Codes E, F) with begin date of March 1st or prior must have an approved *Student Approval* record entered into I-Star by May 15th. These students will be submitted on June 15th in the Regular Term Orphanage Student Reimbursement Claim.
Districts receive 100% reimbursement for services provided to these students.

Accuracy of this data is extremely important! YIC students, Fund Codes E or F with begin date of March 1st or prior, not submitted by the deadline of May 15th **WILL NOT** be included in the June 15th Regular Term Student Reimbursement Claim that provides 100% reimbursement for the services provided by the district.

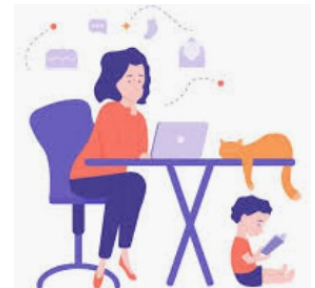
Dates to Remember

May 15, 2020 - Deadline to report YIC (Fund E or F) with begin date prior to March 1st

May 25, 2020 - Office closed in observance of Memorial Day

June 15, 2020 - Regular Term Orphanage (YIC) Fund E or F Claim Due

June 30, 2020 - Personnel Approval Data Due



Inside this Issue

Special Education FAQ Released by ISBE	1
Sp Ed Youth-In-Care Verification Due May 15 th	1
Recorded Fund E Claims Webinar Available on Website	2
Events Registration	2

Recorded Fund E Claims Webinar Available on Website

If you missed the Fund E Student Reimbursement Claim webinar that was held last week, you are in luck! The recorded session can be viewed at your convenience from the home page of our website, www.hbug.k12.il.us, under the 'Hot Topics' section or at the following links:

[Fund E Claims - Regular Term \(recording\)](#)

[Fund E Claims - Presentation Notes](#)

[Fund E Claims - Follow up FAQ](#)

Updates to I-Star

ISBE released an update to I-Star on Wednesday, April 22nd. To view the items included in this update click the link below:

[Recently Added](#)

Events Registration

On-line webinars are continuing as scheduled. Be sure to sign up for a training today! To view the upcoming schedule, visit our website (www.hbug.k12.il.us) then select the 'Event' tab or simply click the following link:

[Events](#)

Events

(click the events to register, change date in drop-down)

- [4/28/20 Fund F Claims - Private Facility Orphanage 9:00AM \(Notes\)](#)
- [5/4/20 Fund X Claims - Excess Cost 1:00PM \(Notes\)](#)
- [5/7/20 I-Star End of Year 9:00AM](#)
- [5/11/20 Fund B Claims - Private Facility 9:00AM \(Notes\)](#)
- [5/14/20 Fund E Claims - Regular Term Orphanage 9:00AM \(Notes\)](#)
- [5/18/20 Preparing for Personnel Snapshot 9:00AM](#)
- [5/21/20 Fund X Claims - Excess Cost 9:00AM \(Notes\)](#)
- [6/1/20 Fund E Claims - Regular Term Orphanage 1:00PM \(Notes\)](#)

Email your questions to client support at:
support@hbug.k12.il.us