



Harrisburg Project

Software Support for Special Education

WEEKLY NEWS BRIEFING

DECEMBER 3, 2018

www.hbug.k12.il.us

support@hbug.k12.il.us

800-635-5274

December 1 Child Count

The December 1 Child Count **WAS NOT** collected by ISBE on December 1st! ISBE **WILL BEGIN** collecting *Student Approval* 'Data Snapshots' on Friday, February 1st. This will continue on a weekly basis every Friday. The **FINAL** *Student Approval* 'Data Snapshot' will be picked up on Friday, March 1st. The data picked up on March 1st will be the information used for all reporting that is based on the December 1 Child Count.

Now is the time to be reviewing the *Student Approval* records in I-Star. To review the current *Student Approvals* in I-Star, run the 'Alphabetic List of Student Approvals' by going to *Student* -> *Approvals* from the Report tab.

Please remember, in order for a *Student Approval* record to be included in the December 1 Child Count, it must be active on November 30th and listed as 'Approved'. If a *Student Approval* record is listed as 'Approved' on February 8th, but for various reasons is listed as 'Disapproved' on March 1st, that *Student Approval* record **will NOT** be included in the December 1 Child Count for your district.

Dates to Remember

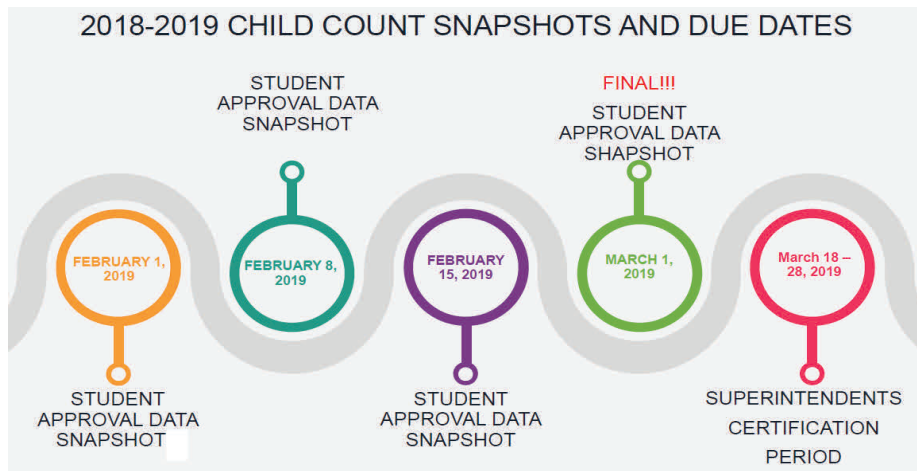
December 21, 2018-January 1, 2019 - Office Closed for Christmas/New Year Break

January 21, 2019 - Office Closed in Observance of Martin Luther King Jr. Birthday

February 1, 2019 - December 1 Child Count Data Snapshot begins

February 12, 2019 - Office Closed in Observance of Lincoln's Birthday

February 18, 2019 - Office Closed in Observance of President's Day



Inside this Issue . . .

December 1 Child Count	1
Evidence Based Funding PreK Errors	2
IDEA Excess Cost Reports in I-Star	2
Event Registration	3

Email your questions to client support at:
support@hbug.k12.il.us

Evidence Based Funding PreK Errors

Last week ISBE contacted school districts about potential data errors in their enrollment to ensure data quality for evidence-based funding. In several cases there was a miscommunication about Special Education PreK approvals being required by today, December 3rd. PreK approvals in I-Star are NOT required today, however they do need to have an accurate SIS enrollment by Wednesday, December 5th to be included in the October 1 enrollment.

The recent ISBE memo can be viewed at the following link:

[Sp Ed PreK Approvals-Evidence-based Funding](#)

If you need assistance with the October 1 evidence-based funding count, contact the SIS help desk at 217-558-3600, ext. 3.

IDEA Excess Cost Reports in I-Star

Districts are receiving the request to complete the IDEA Excess Cost worksheet for special education students. I-Star can provide the necessary data for Section D, line 24. The IDEA Excess cost Worksheet Instructions(FY19) is available at the following link:

[IDEA Excess Cost Worksheet Instructions \(FY19\)](#)

The following reports are available by clicking the Report tab to obtain the necessary information:

I-STAR Reports	
Report Type: Student	Report Categories: Approvals
Select Report	Description
<input type="radio"/>	Alphabetic List of Student Approvals
<input type="radio"/>	Approvals by Serving School
<input type="radio"/>	Approvals Not Reported
<input type="radio"/>	Approvals Reported
<input type="radio"/>	Approvals Reported for Child Count
<input type="radio"/>	Indicator 11 Report by Resident District
<input type="radio"/>	Indicator 13 NOT Meeting Requirements
<input type="radio"/>	Medicaid Students*
<input checked="" type="radio"/>	Student Grades 9-12 Active on Child Count
<input checked="" type="radio"/>	Student Grades KG-12 Active on Child Count
<input checked="" type="radio"/>	Student Grades KG-8 Active on Child Count

Email your questions to client support at:
support@hbug.k12.il.us

Events Registration

To register for a Harrisburg Project training, visit the 'Events' page directly on our website or at the following link: [Events](#).

Click the name of the event you wish to attend to open the registration form.

Any notes for a webinar will appear right next to the event link.



Events

- 10/2 Events Overview (Recording) (Notes)
- 10/3 Case Load Overview (Recording) (Notes)
- 10/10 Transportation Overview (Recording) (Notes)
- 10/17 Indicator 11 Webinar (Recording) (Notes)
- 10/25 I-Star Reports Export Webinar (Recording) (Notes)
- 10/30 LEA Maintenance Webinar/Q&A (Recording) (Notes)
- 11/7 Student Approvals Refresher Webinar (Recording) (Notes)
- 11/28 Student Approvals Refresher Webinar 9:00AM (Notes)

(click the events to register)

Email your questions to client support at:
support@hbug.k12.il.us