



Harrisburg Project

Software Support for Special Education

WEEKLY NEWS BRIEFING

NOVEMBER 26, 2018

www.hbug.k12.il.us

support@hbug.k12.il.us

800-635-5274

December 1 Child Count

In order to have *Student Approval* records included in the December 1 Child Count, the following must be 'true':

- The student must be receiving services on December 1
- The student needs a *Student Approval* record entered into I-Star
- The *Student Approval* record must be 'Approved'

ISBE will begin collecting *Student Approval* 'Data Snapshots' on Friday, February 1st. This will continue on a weekly basis every Friday. The **FINAL** *Student Approval* 'Data Snapshot' will be picked up on Friday, March 1st. The data picked up on March 1st will be the information used for all reporting that is based on the December 1 Child Count.

Please remember, in order for a *Student Approval* record to be included in the December 1 Child Count, it must be active on December 1 and listed as 'Approved'. If a *Student Approval* record is listed as 'Approved' on February 8th, but for various reasons is listed as 'Disapproved' on March 1st, that *Student Approval* record **will NOT** be included in the December 1 Child Count for your district.

Dates to Remember

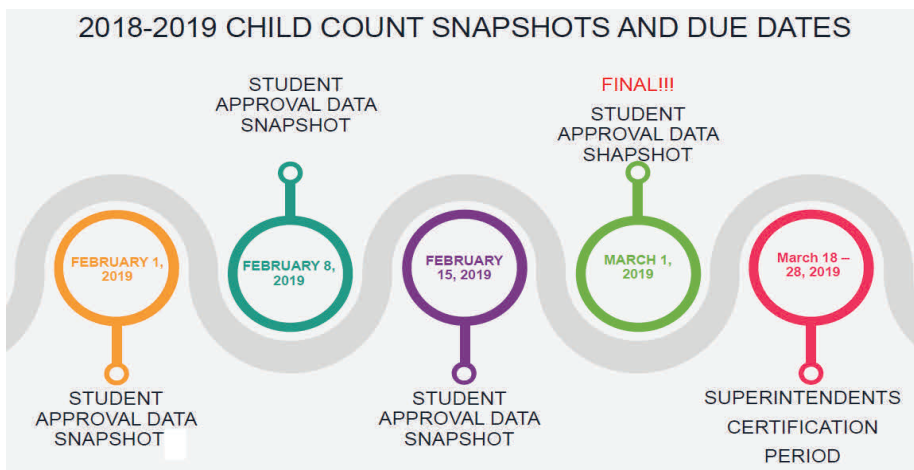
December 21, 2018-January 1, 2019 - Office Closed for Christmas/New Year Break

January 21, 2019 - Office Closed in Observance of Martin Luther King Jr. Birthday

February 1, 2019 - December 1 Child Count Data Snapshot begins

February 12, 2019 - Office Closed in Observance of Lincoln's Birthday

February 18, 2019 - Office Closed in Observance of President's Day



Inside this Issue

December 1 Child Count	1
Updates Released to I-Star	2
Event Registration	2

Email your questions to client support at:
support@hbug.k12.il.us

Updates to I-Star

ISBE released updates to I-Star on Tuesday, November 20, 2018. To view the items included with this update, click the appropriate link below:

[Updates to Student & Personnel Topics](#)

[Updates to IEP Topics](#)

Events Registration

To register for a Harrisburg Project training, visit the 'Events' page directly on our website or at the following link: [Events](#).

Click the name of the event you wish to attend to open the registration form.

Any notes for a webinar will appear right next to the event link.



Events

- 10/2 Events Overview (Recording) (Notes)
- 10/3 Case Load Overview (Recording) (Notes)
- 10/10 Transportation Overview (Recording) (Notes)
- 10/17 Indicator 11 Webinar (Recording) (Notes)
- 10/25 I-Star Reports Export Webinar (Recording) (Notes)
- 10/30 LEA Maintenance Webinar/Q&A (Recording) (Notes)
- 11/7 Student Approvals Refresher Webinar (Recording) (Notes)
- 11/28 Student Approvals Refresher Webinar 9:00AM (Notes)

(click the events to register)

Email your questions to client support at:
support@hbug.k12.il.us