



Harrisburg Project

Software Support for Special Education

WEEKLY NEWS BRIEFING

APRIL 16, 2018

www.hbug.k12.il.us

support@hbug.k12.il.us

800-635-5274

Student with Disabilities Data Collection and Approval

ISBE has released the 2017-18 Students with Disabilities Data Collection and Approval Instructions. These instructions can be accessed at the following links:

[Students with Disabilities Data Collection and Approval Instructions](#)

[Changes in Students with Disabilities Data Collection and Approval Instructions](#)

Please be sure to review the following notable changes:

Page 1

- ISBE is transitioning away from the FACTS (Funding and Child Tracking System) to IEP Student Tracking and Reporting System (I-Star).
- ISBE will use approved student data to process state reimbursement to districts that file claims and compile the December 1 Child Count.

Page 13

- Private Facility Code (Fund Codes B, F and J only) - The appropriate entity ID number assigned to the private facility must be used. The current list of approved nonpublic private facilities can be found at the following link: [Private Facility Search](#). It is important that the correct entity ID Code be used as this code determines the amount of reimbursement available for the student placement.
- Residentially Placed Students - Beginning in 2017-18 school year, any student that is residentially placed by the school district will need 2 records in I-Star. Both records will need the 'dually enrolled' box marked. The Residential record will be listed as 'R' for Residential services and 'T' for tuition services. The EE code for 'T' Tuition record will be 08; the EE code for the 'R' Residential will be 09 for in-state or 10 for out of state.

Pages 16 and 17

- Removed language to Limited English Proficient Information

To review the ISBE Memo regarding the 2017-18 Students with Disabilities Data Collection and Approval Instructions, click the following link:

[2017-18 Students with Disabilities Data Collection and Approval Instructions](#)

Dates to Remember

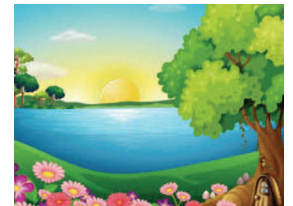
April 9 - 25, 2018 - Classroom Personnel Approval/Student Claims Training

May 28, 2018 - Office Closed in Observance of Memorial Day

July 16, 2018 - Fund E & F Student Reimbursement Pickup

August 15, 2018 - Personnel Approval Data Collection Deadline

August 15, 2018 - Fund B, X and J Student Reimbursement Pickup



Inside this Issue

Students with Disabilities Data Collection and Approval Instructions	1
New 2016-17 Special Education Student Computation Reports	2
Event Registration	2

Email your questions to client support at: support@hbug.k12.il.us

2016-2017 Special Education Student Computation Reports

The Special Education Student Computation Sheet Reports are now available in I-Star for the 2016-2017 regular term and 2017 summer term. To generate the special education computation sheets in I-Star, go to *Reports -> Student -> Reimbursement/Claim ->* Choose the computation report that applies to your claims filed in I-Star. Make sure you select the correct school year of 2016-2017 (reports may be empty if no claims were submitted for that category).

The computation reports will reflect the total claim and actual reimbursement levels:

- 100% Individual Orphanage
- 100% Summer Orphanage
- 89.9% Private Facility
- 13.9% Excess Cost

To review the entire ISBE memo 'New 2016-2017 Special Education Student Computation Reports' click the following link:

[New 2016-2017 Special Education Student Computation Reports](#)

Events Registration

Registration for all events, both online and at location may now be found at the following link: [Event Registration](#)

When registering for a training, please be sure to include your full email address. Harrisburg Project will provide a hard copy of the presentation material at each location; please bring note taking materials.

Date	Location	Name	Time	Notes
4/16/18	Bensenville	Personnel Approval / Student Claims Training	1:00 PM - 4:00 PM	Notes
4/17/18	Oak Forest	Personnel Approval / Student Claims Training	Full	Notes
4/17/18	Charleston	Personnel Approval / Student Claims Training	1:00 PM - 4:00 PM	Notes
4/18/18	Bloomington	Personnel Approval / Student Claims Training	8:30 AM - 11:30 AM	Notes
4/18/18	Glendale Heights	Personnel Approval / Student Claims Training	9:00 AM - 12:00 PM	Notes
4/25/18	Norris City	Personnel Approval / Student Claims Training	9:00 AM - 12:00 PM	Notes
5/01/18	Online	Personnel Approval / Student Claims Training	1:00 PM - 4:00 PM	Notes
5/03/18	Online	Personnel Approval / Student Claims Training	9:00 AM - 12:00 PM	Notes
5/10/18	Online	Personnel Approval / Student Claims Training	9:00 AM - 12:00 PM	Notes
5/16/18	Online	Personnel Approval / Student Claims Training	9:00 AM - 12:00 PM	Notes
5/23/18	Online	Personnel Approval / Student Claims Training	9:00 AM - 12:00 PM	Notes

Email your questions to client support at:
support@hbug.k12.il.us