



Harrisburg Project

Software Support for Special Education

WEEKLY NEWS BRIEFING

NOVEMBER 19, 2018

www.hbug.k12.il.us

support@hbug.k12.il.us

800-635-5274

Up-To-Date Student Approval Errors

The 2018-19 Child Count is quickly approaching. Now is the time to be working to enter all students that are receiving special education for this school year, as well as correcting *Student Approval* data errors.

In order to have the most up-to-date *Student Approval* error listing, simply go to the 'Student Approvals Filter', then select 'Recheck Edits'.

The user will receive an email stating when the error checking is complete. You should then run the 'Student Approval Errors Listing' or 'Student Approval Errors by Resident District and Serving School' report.

Select Report	Description
<input checked="" type="radio"/>	Student Approval Errors by Resident District and Serving School
<input checked="" type="radio"/>	Student Approval Errors Listing
<input type="radio"/>	Student Claim Errors By Resident District And Serving School
<input type="radio"/>	Student Indicator Errors
<input type="radio"/>	Student Missing Exit Data

Dates to Remember

November 21-23, 2018 - Office Closed in Observance of Thanksgiving

December 21, 2018-January 1, 2019 - Office Closed for Christmas/New Year Break

January 21, 2019 - Office Closed in Observance of Martin Luther King Jr. Birthday



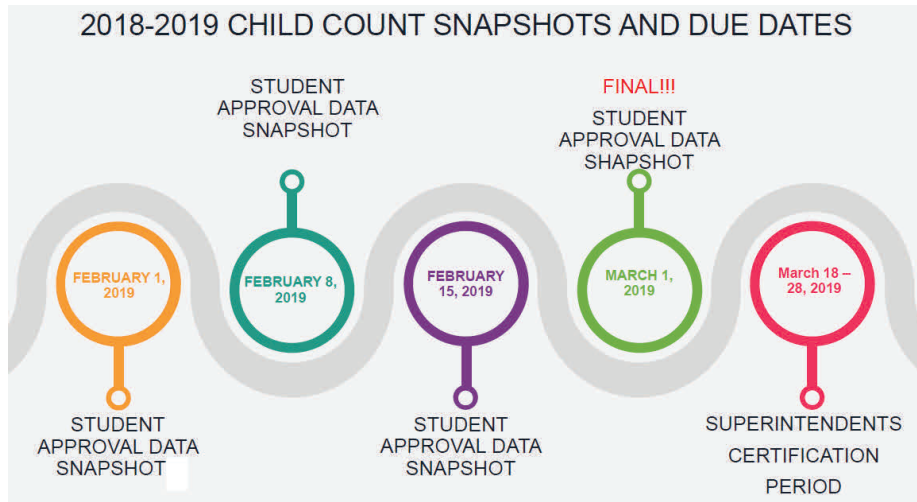
Inside this Issue

- Up-To-Date Student Approval Errors** 1
- December 1 Child Count Data Pickup** 2
- Event Registration** 2

Email your questions to client support at: support@hbug.k12.il.us

December 1 Child Count Data Pickup

ISBE will begin collecting Student Approval data snapshots as of February 1, 2019 and will continue weekly until the final collection on March 1, 2019. Be sure that you are prepared by having your data up-to-date and error free!



Events Registration

To register for a Harrisburg Project training, visit the 'Events' page directly on our website or at the following link: [Events](#).

Click the name of the event you wish to attend to open the registration form.

Any notes for a webinar will appear right next to the event link.



Events

- [10/2 Events Overview \(Recording\) \(Notes\)](#)
- [10/3 Case Load Overview \(Recording\) \(Notes\)](#)
- [10/10 Transportation Overview \(Recording\) \(Notes\)](#)
- [10/17 Indicator 11 Webinar \(Recording\) \(Notes\)](#)
- [10/25 I-Star Reports Export Webinar \(Recording\) \(Notes\)](#)
- [10/30 LEA Maintenance Webinar/Q&A \(Recording\) \(Notes\)](#)
- [11/7 Student Approvals Refresher Webinar \(Recording\) \(Notes\)](#)
- [11/28 Student Approvals Refresher Webinar 9:00AM \(Notes\)](#)

(click the events to register)

Email your questions to client support at:
support@hbug.k12.il.us