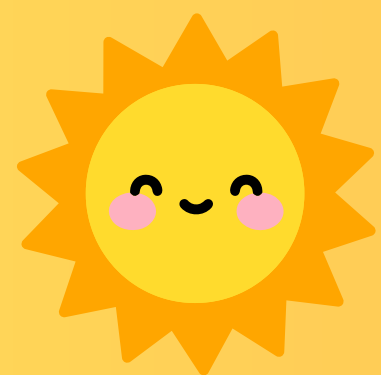




Harrisburg Project

Software Support for Special Education

SCHOOL YEAR 2022-2023



SPEECH ONLY



SPEECH ONLY PREK



SPEECH TEACHER SALARY: \$56,000

DAYS PER YEAR: 180

HOURS PER DAY: 7

SALARY/DAYS

$\$56,000 / 180 = \311 PER DAY

$\$311$ PER DAY / 7 HOURS PER DAY = $\$44$ PER HOUR

STUDENT RECEIVES 20 MINUTES SPEECH PER DAY

20 MINUTES X 180 DAYS = 3600 MINUTES PER YEAR

3600 MINUTES / 60 MINUTES = 60 HOURS PER YEAR

60 HOURS PER YEAR X $\$44$ PER HOUR =

$\$2,640$ EDUCATION COST

**NOTE: PREK IS NOT ENTITLED TO REGUAR EDUCATION
PER CAP.**