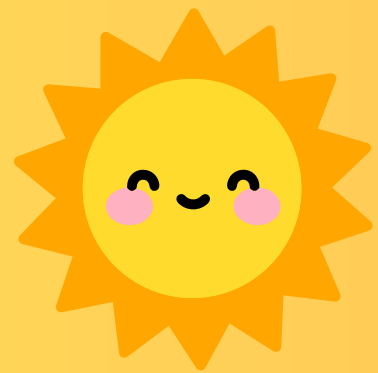




Harrisburg Project

Software Support for Special Education

SCHOOL YEAR 2022-2023



SPEECH ONLY



SPEECH ONLY K-12



SPEECH TEACHER SALARY: \$56,000

DAYS PER YEAR: 180

HOURS PER DAY: 7

% REGULAR ED: 97%

PER CAP: \$9,500

SALARY/DAYS

$\$56,000 / 180 = \311 PER DAY

$\$311$ PER DAY / 7 HOURS PER DAY = \$44 PER HOUR

STUDENT RECEIVES 20 MINUTES SPEECH PER DAY

20 MINUTES X 180 DAYS = 3600 MINUTES PER YEAR

3600 MINUTES / 60 MINUTES = 60 HOURS PER YEAR

60 HOURS PER YEAR X \$44 PER HOUR =

\$2,640 EDUCATION COST

.97% REGULAR ED X \$9,500 PER CAP = \$9,215

\$2,640 TEACHER COST + % REG ED PER CAP \$9,215 =

\$11,855 EDUCATION COST

**NOTE: IF STUDENT IS LESS THAN 5% SPECIAL ED,
EDUCATION COSTS CAN BE PER CAP AND NO
CALCULATION IS NECESSARY.**